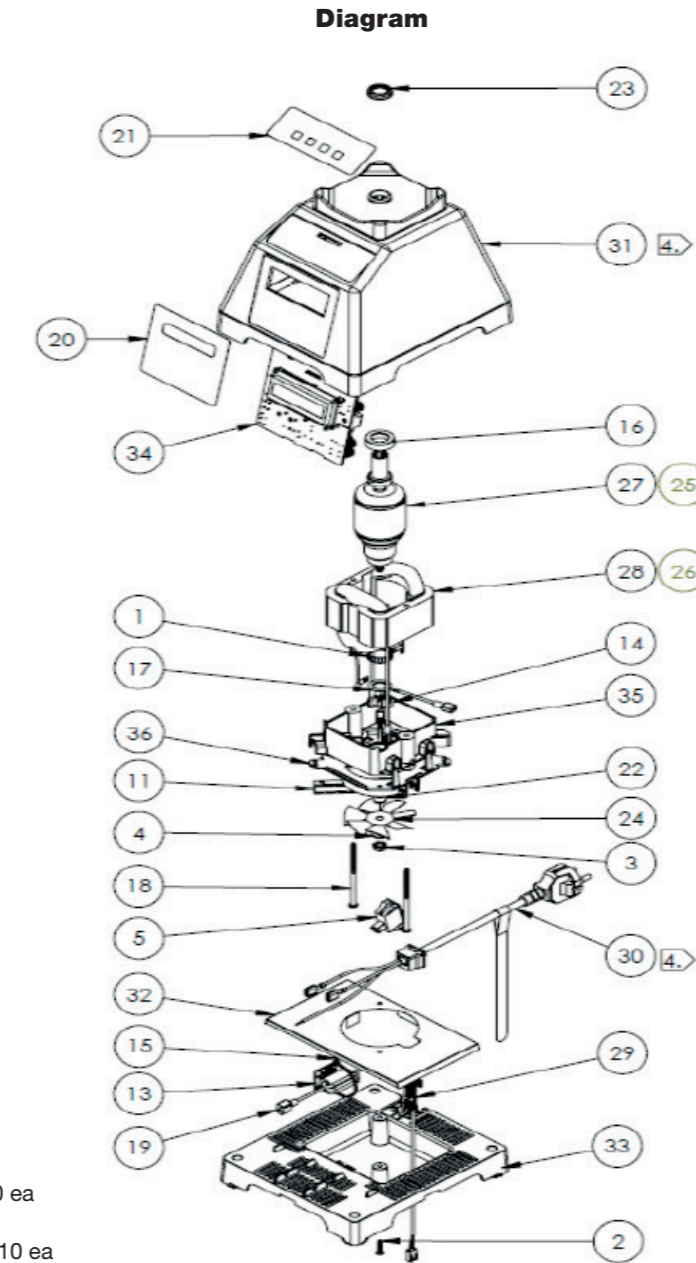


# EZ 600

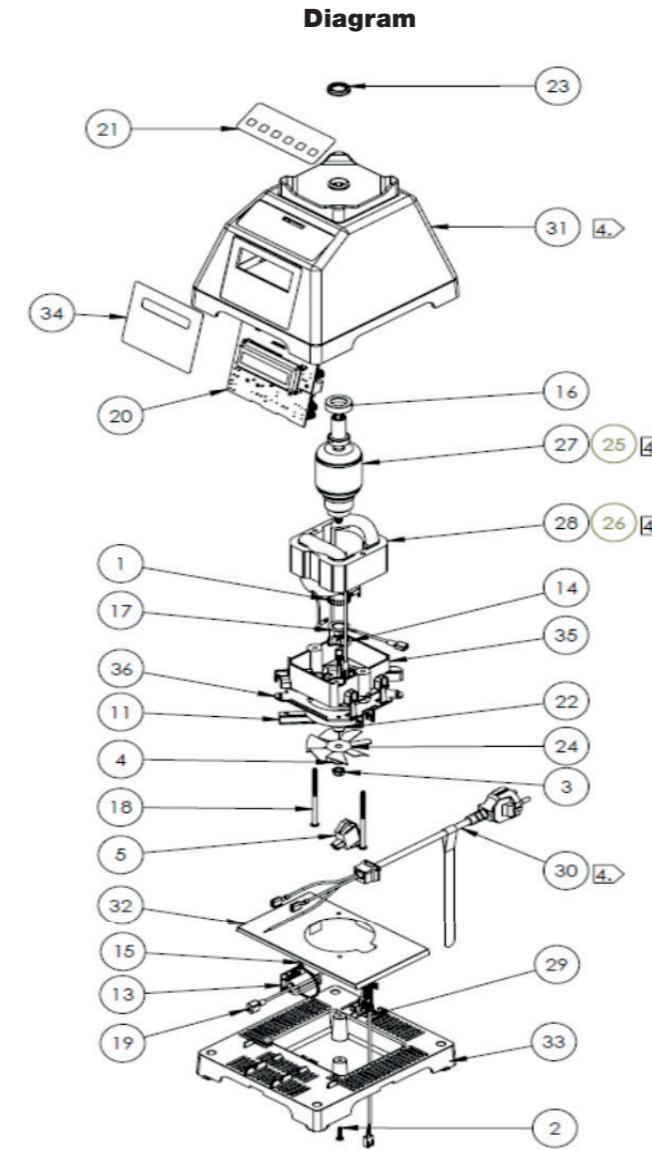
	Diagram N°	Item N°	QTY	Product name	
<b>Base Items</b>	1	10-008	1	Ring, Tolerance, 8mm Bearing, Waffle Spacer	
	2	10-011-C05G	2	Screw, STML, SST, CR, #6-20x 5/8in, PHP	
	3	10-020-F06RT	1	Nut, Steel, ZP, UNF, 1/4-28, Nylon Insert, RH, Thin	
	4	10-022-01F01N	1	Washer, Type A, #12, ZP, Narrow, Flat	
	5	10-025-01	1	Switch, Power, Rocker, O-I, Single Pole, 16A-125V, 10A-250V	
	7	10-029-14-SRV	1	Wire, Jumper, 16 AWG, Green w/Yellow Stripe, 8.0in L, 1/4in	
	9	10- 029- 16- SRV	1	Wire, Jumper, 16 AWG, Blue, 5in L, 1/4in Female Tab x 1/4in, 15 ea	
	10	10- 029- 17- SRV	1	Wire, Jumper, 16 AWG, Brown, 10.0in L, 1/4in Flag Female Tab, 15 ea	
	11	10-030-03	2	PHASEOUT! Brush, 120V/240V, Replaced by 10-030-04	
	12	10-031-06	1	Connector, Closed End, LG Bell	
	13	10-044-03	1	Retainer, Wire, Plastic, Adhesive Mount	
	14	10-067-03	1	Spring, Wave, Overlap, Single Turn, OD .875, ID .62, Hght .13	
	16	10-201-03	1	Cup, Rubber, Bearing	
	17	10-231-05	1	Ground Lead, 10in L with 1/4in Tab Connector	
	18	10-245-01	2	Screw, Custom, SST, CR, 8-18 x 3-1/8in, PHP, Type 25, Blk	
	19	10-271	1	Grounding Wire w/Ferrite	
	34	15- 443- 15- SRV	1	Electronic Assembly with Firmware, ES3, Three size w/code select for smoothie, shake, or coffee	
	21	20-202-62	1	OVERLAY, TOUCHPAD, Switch, SML, 4 button	
	22	20-214-SRV	1	Spacer, Fan, 5 ea	
	23	20-217-01	1	Sling Ring, Large I.D.	
	24	20-228-02	1	Fan Blade, Uneven, LH, 7 Blade	
			<b>11-404-01-SRV</b>		<b>Quadpack, AMETEK, 120 V 1.5" stack, 4 armatures, 4 fields</b>
	120V		20-302-SRV	1	Armature Assembly, 1-1/2in Stack, 120V, Ametek, 4 ea
		27	<b>11-404-02-SRV</b>		<b>Quadpack, AMETEK, 240 V 1.5" stack, 4 armatures, 4 fields</b>
240V		20-310-SRV	1	Armature Assembly, 1-1/2in Stack, 240V, 4 ea	
	28	<b>11-404-01-SRV</b>		<b>Quadpack, AMETEK, 120 V 1.5" stack, 4 armatures, 4 fields</b>	
120V		20-303-SRV	1	Field Assembly, 1-1/2in Stack, 120V, 4 ea	
		<b>11-404-02-SRV</b>		<b>Quadpack, AMETEK, 240 V 1.5" stack, 4 armatures, 4 fields</b>	
240V		20-311-SRV	1	Field Assembly, 1-1/2in Stack, 120V, 4 ea	
	29	20-315-01	1	Magnetic Pickup Assembly, Q-Series, Board Connector	
	31	21-201-03-SRV	1	PHASEOUT! Cover, ES3, Blk	
	32	21-211	1	Baffle, Square, ES3	
	33	21-301-SRV	1	Service Parts, Base Plate Assembly, ES3, with Feet, 36 ea	
	20	21-803-07	1	Label, Display, EZ 600	
	35	28-005-SRV	1	Service Parts, Bracket, Motor, Fan End, 14 ea	
	36	28-027-01-SRV	1	Service Parts, Bracket, Shroud, Motor, For Magnetic Pickup Assembly, 25 ea	
<b>Cords</b>		20-324-35-SRV	1	ASSEMBLY, Power Cord, ES3/CTB2, AU, Black, GTSA, 3G, 1.00mm <sup>2</sup> , 10A/250V SRV, 10 ea	
		20-324-36-SRV	1	ASSEMBLY, Power Cord, ES3/CTB2, KOREAN, Black, SCHUKO, H05VV-F, 3G, 1.00mm <sup>2</sup> , 13A/250V SRV, 10 ea	
		20-324-43-SRV	1	ASSEMBLY, Power Cord, CTB1/CTB3, UK, Black, HO5VV-F, 3G, 1.00mm <sup>2</sup> , 13A/250V, 10 ea	
		20-324-45-SRV	1	ASSEMBLY, Power Cord, ES3/CTB2, CHINA, Black, HO5VV-F, 3G, 1.00mm <sup>2</sup> , 10A/250V, CCC COMPLIANT, 10 ea	
		20-324-46-SRV	1	ASSEMBLY, Power Cord, ES3/CTB2, EU, SCHUKO, Black, OIL, H05RBF, 3G, 1.00mm <sup>2</sup> , 10A/250V SRV, 10 ea	
		20-324-24-SRV	1	ASSEMBLY, Power Cord, ES3/CTB2, TAIWAN, Black, HO5VV-F, 3G, VCTF, 1.50mm <sup>2</sup> , 15A/125V, 10 ea	
		20-324-23-SRV	1	ASSEMBLY, Power Cord, ES3/CTB2, USA/JAPAN, Black, NEMA 5-15P, 16/3 SJT, 13A/125V	



Error Code	Definition
E-01	Over temperature
E-02	Overload
E-03	No Temp Sensor
E-04	No Zero Crossing
E-05	Reset Error

# CHEF 600

	Diagram N°	Item N°	QTY	Product name
<b>Base Items</b>	1	10-008	1	Ring, Tolerance, 8mm Bearing, Waffle Spacer
	2	10-011-C05G	2	Screw, STML, SST, CR, #6-20x 5/8in, PHP
	3	10-020-F06RT	1	Nut, Steel, ZP, UNF, 1/4-28, Nylon Insert, RH, Thin
	4	10-022-01F01N	1	Washer, Type A, #12, ZP, Narrow, Flat
	5	10-025-01	1	Switch, Power, Rocker, O-I, Single Pole, 16A-125V, 10A-250V
	6	10-029-17-SRV	1	Wire, Jumper, 16 AWG, Brown, 10.0in L, 1/4in Flag Female Tab, 15 ea
	7	10-029-14-SRV	1	Wire, Jumper, 16 AWG, Green w/Yellow Stripe, 8.0in L, 1/4in
	8	10-029-15-SRV	1	Wire, Jumper, 16 AWG, Brown, 10.0in L, 1/4in Flag Female Tab
	11	10-030-03	2	PHASEOUT! Brush, 120V/240V, Replaced by 10-030-04
	12	10-031-06	1	Connector, Closed End, LG Bell
	13	10-044-03	1	Retainer, Wire, Plastic, Adhesive Mount
	14	10-067-03	1	Spring, Wave, Overlap, Single Turn, OD .875, ID .62, Hght .13
	16	10-201-03	1	Cup, Rubber, Bearing
	17	10-231-05	1	Ground Lead, 10in L with 1/4in Tab Connector
	18	10-245-01	2	Screw, Custom, SST, CR, 8-18 x 3-1/8in, PHP, Type 25, Blk
	19	10-271	1	Grounding Wire w/Ferrite
	20	15-419-08-SRV	1	Electronic Assy w/ FW, Chef 600, Stop-Low-Medium-High-LowPulse-HighPulse, New ZC Circuit SRV, 5 ea
	21	20-202-64	1	OVERLAY, TOUCHPAD, 3SPD HI-LO PULSE
	22	20-214-SRV	1	Spacer, Fan, 5 ea
	23	20-217-01	1	Sling Ring, Large I.D.
	24	20-228-02	1	Fan Blade, Uneven, LH, 7 Blade
	120V		<b>11-404-01-SRV</b>	<b>Quadpack, AMETEK, 120 V 1.5" stack, 4 armatures, 4 fields</b>
		25	20-302-SRV	Armature Assembly, 1-1/2in Stack, 120V, Ametek, 4 ea
	240V		<b>11-404-02-SRV</b>	<b>Quadpack, AMETEK, 240 V 1.5" stack, 4 armatures, 4 fields</b>
	26	20-310-SRV	Armature Assembly, 1-1/2in Stack, 240V, 4 ea	
120V		<b>11-404-01-SRV</b>	<b>Quadpack, AMETEK, 120 V 1.5" stack, 4 armatures, 4 fields</b>	
		20-303-SRV	Field Assembly, 1-1/2in Stack, 120V, 4 ea	
240V		<b>11-404-02-SRV</b>	<b>Quadpack, AMETEK, 240 V 1.5" stack, 4 armatures, 4 fields</b>	
	29	20-311-SRV	Field Assembly, 1-1/2in Stack, 120V, 4 ea	
	31	20-315-01	Magnetic Pickup Assembly, Q-Series, Board Connector	
	32	21-201-03-SRV	PHASEOUT! Cover, ES3, Blk	
	33	21-211	Baffle, Square, ES3	
	34	21-301-SRV	Service Parts, Base Plate Assembly, ES3, with Feet, 36 ea	
	35	21-803-08	LABEL, DISPLAY, CHEF 600	
	36	28-005-SRV	Service Parts, Bracket, Motor, Fan End, 14 ea	
		28-027-01-SRV	Service Parts, Bracket, Shroud, Motor, For Magnetic Pickup Assembly, 25 ea	
<b>Cords</b>		20-324-35-SRV	1	ASSEMBLY, Power Cord, ES3/CTB2, AU, Black, GTSA, 3G, 1.00mm2, 10A/250V SRV, 10 ea
		20-324-36-SRV	1	ASSEMBLY, Power Cord, ES3/CTB2, KOREAN, Black, SCHUKO, H05VV-F, 3G, 1.00mm2, 13A/250V SRV, 10 ea
		20-324-43-SRV	1	ASSEMBLY, Power Cord, CTB1/CTB3, UK, Black, HO5VV-F, 3G, 1.00mm2, 13A/250V, 10 ea
		20-324-45-SRV	1	ASSEMBLY, Power Cord, ES3/CTB2, CHINA, Black, HO5VV-F, 3G, 1.00mm2, 10A/250V, CCC COMPLIANT, 10 ea
		20-324-46-SRV	1	ASSEMBLY, Power Cord, ES3/CTB2, EU, SCHUKO, Black, OIL, H05RBF, 3G, 1.00mm2, 10A/250V SRV, 10 ea
		20-324-24-SRV	1	ASSEMBLY, Power Cord, ES3/CTB2, TAIWAN, Black, HO5VV-F, 3G, VCTF, 1.50mm2, 15A/125V, 10 ea
		20-324-23-SRV	1	ASSEMBLY, Power Cord, ES3/CTB2, USA/JAPAN, Black, NEMA 5-15P, 16/3 SJT, 13A/125V



Error Code	Definition
E-01	Over temperature
E-02	Overload
E-03	No Temp Sensor
E-04	No Zero Crossing
E-05	Reset Error

# CHEF 775 MOTOR BASE ASSMBLY

Diagram N°	Item N°	QTY	Product name
<b>Base Items</b>			
1	10-012-C04CG	2	Screw, TFC, ZP, CR, #6-20 x 1/2in, PHP, Type 25
3	10-012-D07CG	4	Screw, TFC, ZP, CR, #8-18 x 7/8in, PHP, Type 25
4	10-029-04-SRV	1	Wire, Jumper, 16 AWG, Green w/Yellow Stripe, 4.5in L, 0.25in
5	10-029-14-SRV	1	Wire, Jumper, 16 AWG, Green w/Yellow Stripe, 8.0in L, 1/4in
7	10-044-03	2	Retainer, Wire, Plastic, Adhesive Mount
10	10-245-01	4	Screw, Custom, SST, CR, 8- 18 x 3- 1/8in, PHP, Type 25, Blk
11	10-031-06	1	Connector, Closed End, LG Bell
12	10-271	1	Grounding Wire w/Ferrite
13	15A-445-05-SRV	1	Electronic Assembly with FW, Chef 775, 3 Configs, Cavitation, Pulse, Full Slider, New ZC SRV, 5 ea
14	20-217-01	1	Sling Ring, Large I.D.
16	22-203-01	1	Housing Base, CTB1/CTB3, Overmolded Assembly, Black
17	22-204-02-SRV	1	Baffle, CTB1, Two Piece Bracket, 40 ea
18	22-210	1	Board Support, Foam
19	22-212-02	1	Housing, Middle, Die Cast Aluminum, Blender, Brushed Chrome w/Clear Coat
20	22-214-01-SRV	2	Service Parts, Housing Top, CTB3, Black, 12 ea
21	22-215	1	Diffuser, CTB3
22	22-216-01	1	Foam, CTB3, Baffle
23	22-216-02	1	Foam, CTB3, Base, Bottom
24	22-216-03	1	Foam, CTB3, Base, Wall
25	22-217	1	Weight, Welded, CTB1/CTB3
28	22-809-01	1	Label, Capacitive Touch, SML, 4 Button, CTB1, Black
29	22-810	1	Nameplate, Chef 775

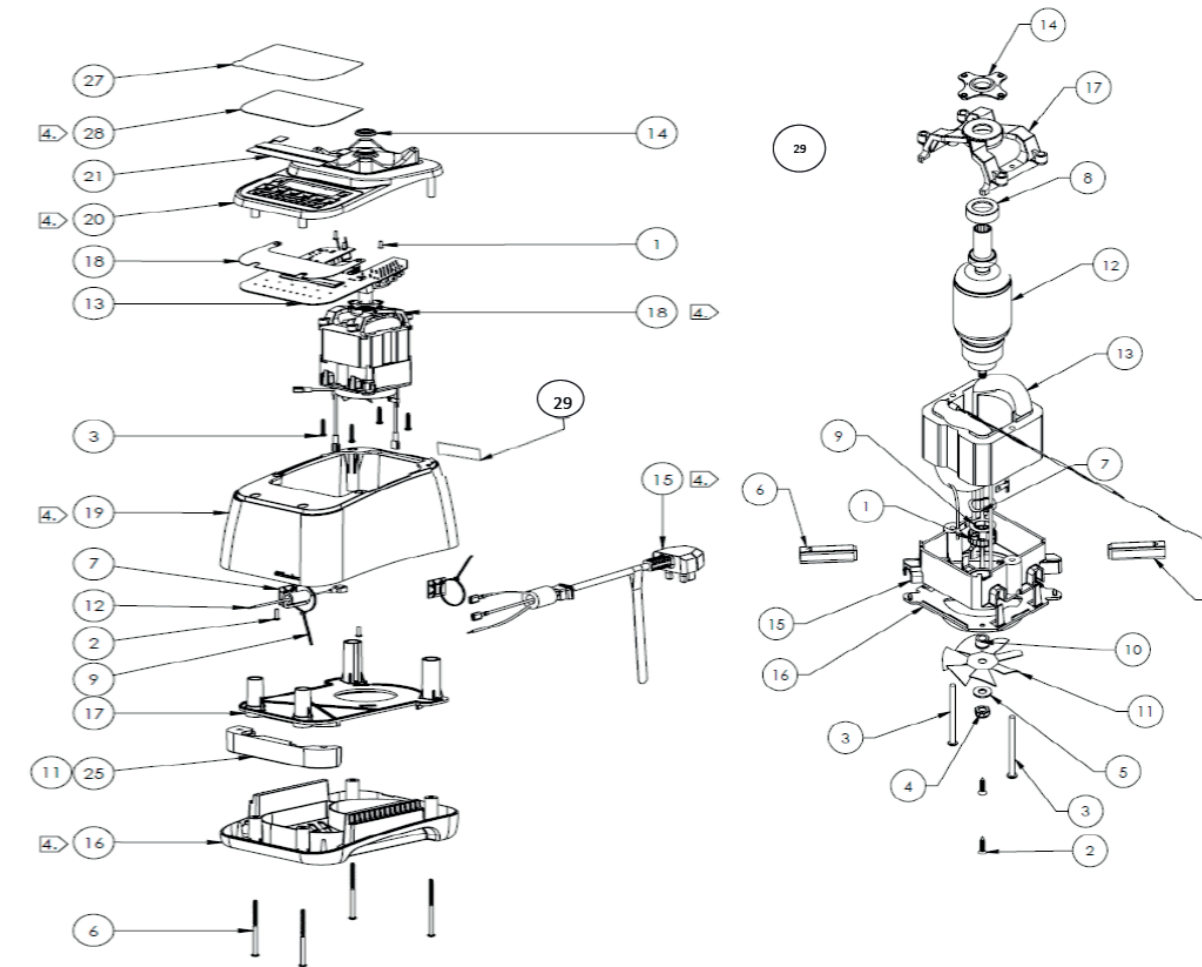
## Motor Specific Items

1	10-008	1	Ring, Tolerance, 8mm Bearing, Waffle Spacer
3	10-015-D20G	2	Screw, Machine, ZP, CR, UNC, #8- 32 x 2- 1/2in, PHP
4	10-020-F06RT	1	Nut, Steel, ,ZP, UNF, 1/4- 28, Nylon Insert, RH, Thin
5	10-022-01F01N	1	Washer, Type A, #12, ZP, Narrow, Flat
6	10-030-03	2	PHASEOUT! Brush, 120V/240V, Replaced by 10- 030- 04
7	10-067-03	1	Spring, Wave, Overlap, Single Turn, OD .875, ID .62, Hght .13
8	10-201-03	1	Cup, Rubber, Bearing
9	10-231-05	1	Ground Lead, 10in L with 1/4in Tab Connector
10	20-214-SRV	1	Spacer, Fan, 5 ea
11	20-228-02	1	Fan Blade, Uneven, LH, 7 Blade
	<b>11-404-03-SRV</b>		<b>Quadpack, Midwest, 120 V 1.75" stack, 4 armatures, 4 fields</b>
120V	11-304-03-SRV	1	Armature Assembly, Double Insulated, 1-3/4in Stack, 120V, 4 ea
	<b>11-404-04-SRV</b>		<b>Quadpack, Midwest, 240 V 1.75" stack, 4 armatures, 4 fields</b>
240V	11-304-04-SRV	1	Armature Assembly, Double Insulated, 1-3/4in Stack, 240V, 4 ea
	<b>11-404-03-SRV</b>		<b>Quadpack, Midwest, 120 V 1.75" stack, 4 armatures, 4 fields</b>
120V	10-427-03-SRV	1	Field Assembly, 1-3/4in Stack, 120V / MIDWEST, 4 ea
	<b>11-404-04-SRV</b>		<b>Quadpack, Midwest, 240 V 1.75" stack, 4 armatures, 4 fields</b>
240V	10-427-04-SRV	1	Field Assembly, 1-3/4in Stack, 240V MIDWEST, 4 ea
14	22-301	1	Magnet Disk Assembly
15	28-005-SRV	1	Service Parts, Bracket, Motor, Fan End, 14 ea
16	28-027-02-SRV	1	Service Parts, Bracket, Shroud Motor, Closing Ring, 25 ea
17	20-271-SRV	1	Bracket, Blender, Motor End, Plastic SRV, 14 ea

## Cords

EU cord	20-324-46-SRV	1	ASSEMBLY, Power Cord, ES3/CTB2, EU, SCHUKO, Black, OIL, H05RBF, 3G, 1.00mm <sup>2</sup> , 10A/250V SRV, 10 ea
CHINA cord	20-324-45-SRV	1	ASSEMBLY, Power Cord, ES3/CTB2, CHINA, Black, HO5VV-F, 3G, 1.00mm <sup>2</sup> , 10A/250V, CCC COMPLIANT, 10 ea
UK cord	20-324-43-SRV	1	ASSEMBLY, Power Cord, CTB1/CTB3, UK, Black, HO5VV-F, 3G, 1.00mm <sup>2</sup> , 13A/250V, 10 ea
KR cord	20-324-36-SRV	1	ASSEMBLY, Power Cord, ES3/CTB2, KOREAN, Black, SCHUKO, H05VV-F, 3G, 1.00mm <sup>2</sup> , 13A/250V SRV, 10 ea
AU cord	20-324-35-SRV	1	ASSEMBLY, Power Cord, ES3/CTB2, AU, Black, GTSA, 3G, 1.00mm <sup>2</sup> , 10A/250V SRV, 10 ea
TW cord	20-324-24-SRV	1	ASSEMBLY, Power Cord, ES3/CTB2, TAIWAN, Black, HO5VV-F, 3G, VCTF, 1.50mm <sup>2</sup> , 15A/125V, 10 ea
US cord	20-324-23-SRV	1	ASSEMBLY, Power Cord, ES3/CTB2, USA/JAPAN, Black, NEMA 5-15P, 16/3 SJT, 13A/125V

## Diagram



## Error Code

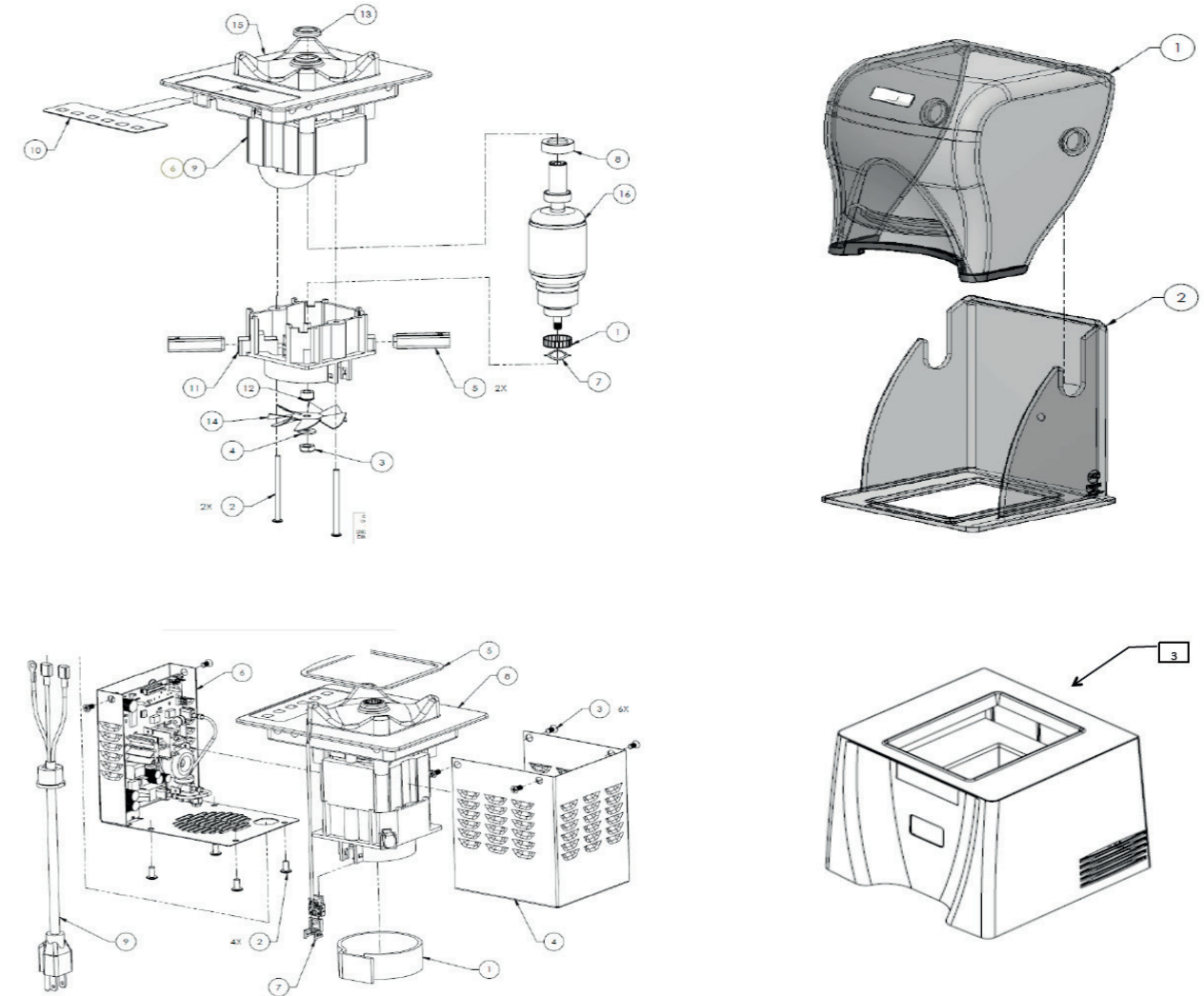
Error Code	Definition
Touch Error Icon	Touch Error
Thermometer Icon	Over temperature
E-02	Overload
E-03	No Temp Sensor
E-04	No Zero Crossing
E-05	Reset Error
E-07	Motor Control Error
E-08	Invalid Cycle
E-09	No Touch Controller
E-10	No Touch Controller Communication
E-11	Touch Controller Self-Test Error

# CONNOISSEUR 825 MOTOR BASE ASSMBLY

Diagram N°	Item N°	QTY	Product name
<b>Housing/Sound enclosure</b>			
1,2	37-501	1	Sound Enclosure, Final, QB3
3	36-501	1	Housing Assembly, Stand, BB3
<b>Motor Base</b>			
1	10-003-05	1	Foam Tape, Single Coated, Low Density, Closed Cell PVC, Acrylic Adhesive, 1/8in x 1in x 75ft
2	10-012-E03BG	4	Screw, TFC, ZP, CR, #10 x 3/8in, PHP, Type 23
3	10-017-D02C	6	Screw, Machine, SST, CR, UNC, #8-32 x 1/4in, Flat Head
4	20-203-02	1	Housing, Back, ICBX/ABCX
5	20-270	1	Wear Strip, Black
6	15-442-01-SRV	1	Electronic Assembly with Firmware, ICB3/5/7
7	20-315-01	1	Magnetic Pickup Assembly, Q-Series, Board Connector
8	20-205	1	Gasket, Santoprene, Commercial Blender
<b>Motor Assembly</b>			
1	10-008	1	Ring, Tolerance, 8mm Bearing, Waffle Spacer
3	10-020-F06RT	1	Nut, Steel, ZP, UNF, 1/4- 28, Nylon Insert, RH, Thin
2	10-015-D20G	2	Screw, Machine, ZP, CR, UNC, #8-32 x 2-1/2in, PHP
4	10-022-01F01N	1	Washer, Type A, #12, ZP, Narrow, Flat
5	10-030-03	2	PHASEOUT! Brush, 120V/240V, Replaced by 10-030-04
6	10-035-04*	1	Thermistor, RoHS
7	10-067-03	1	Spring, Wave, Overlap, Single Turn, OD .875, ID .62, Hght .13
8	10-201-03	1	Cup, Rubber, Bearing
120V	11-404-03-SRV	1	<b>Quadpack, Midwest, 120 V 1.75" stack, 4 armatures, 4 fields</b>
	10-427-03-SRV	1	Field Assembly, 1-3/4in Stack, 120V / MIDWEST, 4 ea
240V	11-404-04-SRV	1	<b>Quadpack, Midwest, 240 V 1.75" stack, 4 armatures, 4 fields</b>
	10-427-04-SRV	1	Field Assembly, 1-3/4in Stack, 240V / MIDWEST, 4 ea
	28-005-SRV	1	Service Parts, Bracket, Motor, Fan End, 14 ea
11	28-027-01-SRV	1	Service Parts, Bracket, Shroud, Motor, For Magnetic Pickup Assembly, 25 ea
	10-010-C05C	2	Screw, STML, ZP, CR, #6 x 5/8in, FH
	20-214-SRV	1	Spacer, Fan, 5 ea
13	20-217-01	1	Sling Ring, Large I.D.
14	20-228-02	1	Fan Blade, Uneven, LH, 7 Blade
15	20-269-01	1	Base, ICB, Die Cast, Finished
120V	11-404-03-SRV	1	<b>Quadpack, Midwest, 120 V 1.75" stack, 4 armatures, 4 fields</b>
	11-304-03-SRV	1	Armature Assembly, Double Insulated, 1- 3/4in Stack, 120V, 4 ea
240V	11-404-04-SRV	1	<b>Quadpack, Midwest, 240 V 1.75" stack, 4 armatures, 4 fields</b>
	11-304-04-SRV	1	Armature Assembly, Double Insulated, 1-3/4in Stack, 240V, 4 ea
	20-202-63	1	Overlay, Touchpad, Switch, 6 Button
<b>Cords</b>			
	20-327-46-SRV	1	ASSEMBLY, Power Cord, ICB, EU, SCHUKO, Black, OIL, H05RBF, 3G, 1.00mm2, 10A/250V SRV, 10 ea
	20-327-45-SRV	1	ASSEMBLY, Power Cord, ICB, CHINA, Black, HO5VV-F, 3G, 1.00mm2, 10A/250V, CCC COMPLIANT, 10 ea
	20-327-43-SRV	1	ASSEMBLY, Power Cord, ICB, UK, Black, HO5VV-F, 3G, 1.00mm2, 13A/250V, 10 ea
	20-327-36-SRV	1	ASSEMBLY, Power Cord, ICB, KOREAN, SCHUKO, Black, H05VV-F, 3G, 1.00mm2, 13A/250V SRV, 10 ea
	20-327-35-SRV	1	ASSEMBLY, Power Cord, ICB, AU, Black, GTSA, 3G, 1.00mm2, 10A/250V SRV, 10 ea
	20-323-24-SRV	1	ASSEMBLY, Power Cord, CBT1/CTB3, TAIWAN, Black, HO5VV-F, 3G, 10 ea

\*Included in 11-404-03-SRV and 11-404-04-SRV

## Diagram



## Error Code

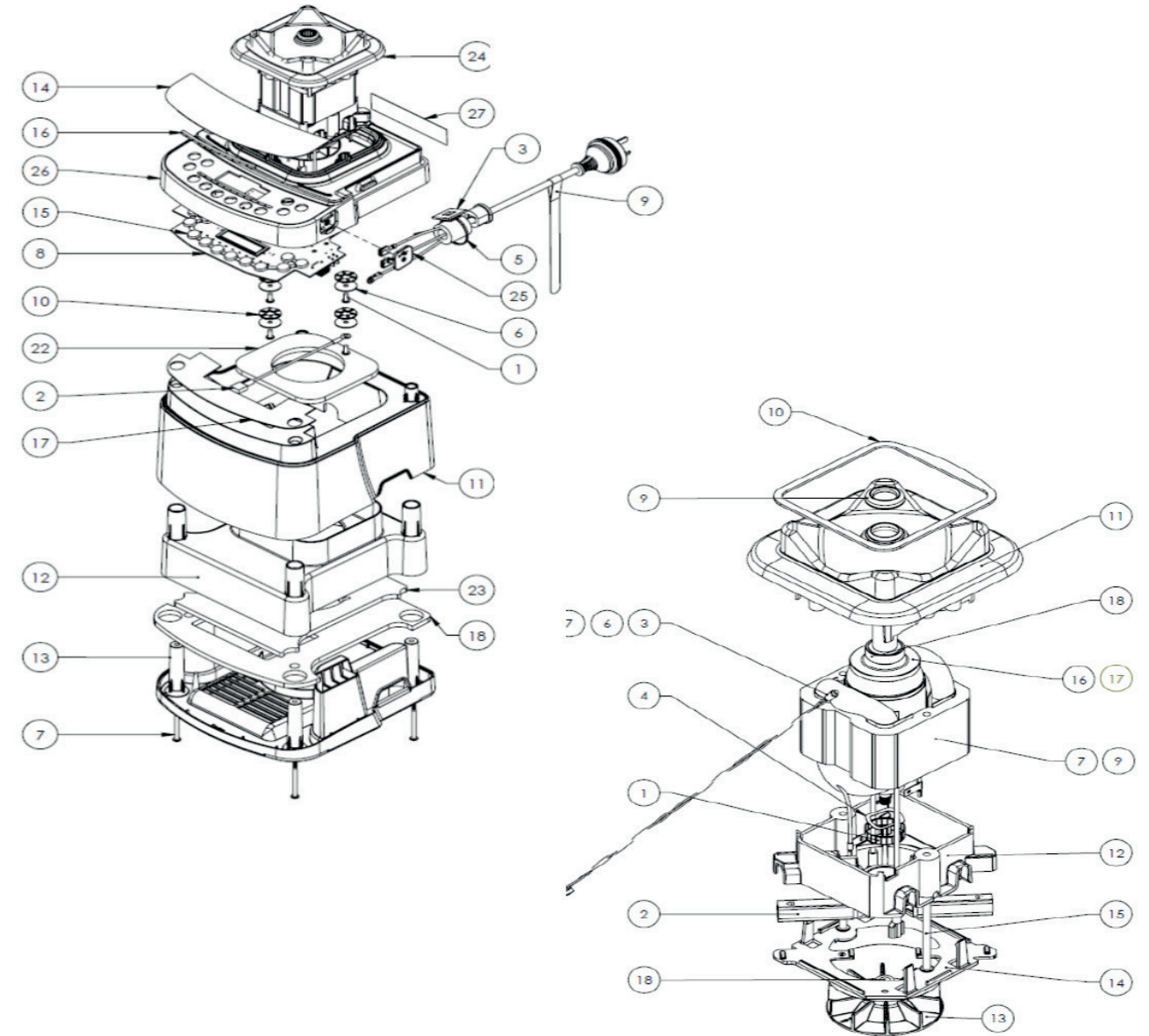
Error Code	Definition
Touch Error Icon	Touch Error
Thermometer Icon	Over temperature
E-02	Overload
E-03	No Temp Sensor
E-04	No Zero Crossing
E-05	Reset Error
E-07	Motor Control Error
E-08	Invalid Cycle
E-09	No Touch Controller
E-10	No Touch Controller Communication
E-11	Touch Controller Self-Test Error

# STEALTH 875 MOTOR BASE ASSEMBLY

	Diagram N°	Item N°	QTY	Product name	
<b>Base Items?</b>	1	10-015-D03G	4	Screw, Machine, ZP, CR, UNC, #8- 32 x 3/8in, PHP	
	2	10-029-04-SRV	1	Wire, Jumper, 16AWG, Green w/Yellow Stripe, 4.5in L, 0.25in	
	3	10-044-03	1	Retainer, Wire, Plastic, Adhesive Mount	
	6	10-209-18	4	Washer, Custom, Steel, AN 970, .2 ID x .88 OD x .065 Thk, ZP	
	7	10-245-01	2	Screw, Custom, SST, CR, 8- 18 x 3- 1/8in, PHP, Type 25, Blk	
	8	15-467-01-SRV	1	EA w/ FW, 15- 367- 01, Capacitive Touch Blender w/USB	
	10	28-004	4	Washer, Motor Isolation, Stealth	
	11	28-013-01	1	Housing, Middle, Stealth, Molded, Black	
	12	28-014	1	Baffle, Stealth	
	13	28-015-01	1	Housing, Base, Stealth, Overmolded Assembly, Red	
	14	28-018	1	Graphic Overlay, Stealth	
	15	28-020-01	1	Diffuser, Button, Stealth	
	16	28-020-02	1	Diffuser, Slider, Stealth	
	17	28-025	1	Gasket, PCB, Stealth	
	18	28-026-01	1	Foam, Base Bottom, Stealth	
	19	28-026-02	1	Foam, Top Middle, Stealth	
	20	28-026-03	1	Foam, Baffle, Inside, Long, Stealth	
	21	28-026-04	1	Foam, Baffle, Inside, Short, Stealth	
	22	28-026-05	1	Foam, Baffle, Motor, Stealth	
	23	28-026-06	1	Foam, Baffle, Inside, Top, Stealth	
	25	28-303-SRV	1	USB Cover Assembly, Stealth, 5 ea	
	26	28-306-SRV	1	Upper Housing Gasket Assembly, Stealth, 5 ea	
	27	28-800	1	Nameplate, Stealth 875	
	<b>Motor Specific Items</b>	1	10-008	1	Ring, Tolerance, 8mm Bearing, Waffle Spacer
		2	10-030-03	2	PHASEOUT! Brush, 120V/240V, Replaced by 10-030-04
		3	10-035-04*	1	Thermistor, RoHS
		4	10-067-03	2	Spring, Wave, Overlap, Single Turn, OD .875, ID .62, Hght .13
<b>120V</b>		<b>11-404-05-SRV</b>		<b>Quadpack, Midwest, 120 V 1.75" stack, Stealth, 4 armatures, 4 fields</b>	
	7	10-427-03-SRV	1	Field Assembly, 1-3/4in Stack, 120V / MIDWEST, 4 ea	
<b>240V</b>		<b>11-404-06-SRV</b>		<b>Quadpack, Midwest, 240 V 1.75" stack, Stealth, 4 armatures, 4 fields</b>	
	7	10-427-04-SRV	1	Field Assembly, 1-3/4in Stack, 240V / MIDWEST, 4 ea	
	9	20-217-01	1	Sling Ring, Large I.D.	
	10	20-270	1	Wear Strip, Black	
	11	28-002	1	Mount, Motor, Stealth	
	12	28-005-01-SRV	1	Bracket, Motor, Fan End, Stealth, 14 ea	
	13	28-006-SRV	1	Fan, Radial, Plastic, Straight Blade, Stealth, 14 ea	
	14	28-027-02-SRV	1	Service Parts, Bracket, Shroud, Motor, Closed Ring, 25 ea	
<b>120V</b>		<b>11-404-05-SRV</b>		<b>Quadpack, Midwest, 120 V 1.75" stack, Stealth, 4 armatures, 4 fields</b>	
	16	28-300-13-SRV	1	ASSEMBLY, ARMATURE, STEALTH, 120V DIM SRV, 4 ea	
<b>240V</b>		<b>11-404-06-SRV</b>		<b>Quadpack, Midwest, 240 V 1.75" stack, Stealth, 4 armatures, 4 fields</b>	
	16	28-300-14-SRV	1	ASSEMBLY, ARMATURE, STEALTH, 240V DIM SRV, 4 ea	
<b>Cords</b>		EU cord	1	ASSEMBLY, Power Cord, STEALTH, EU, SCHUKO, BLACK, OIL, HO5RBF, 3G, 1.00mm2, 10A/250V SRV, 10 ea	
		CHINA cord	1	ASSEMBLY, Power Cord, CTB1/CTB3, CHINA, BLACK, HO5VV-F, 3G, 1.00mm2, 10A/250V, CCC COMPL SRV, 10 ea	
		UK cord	9 ???	ASSEMBLY, Power Cord, STEALTH, UK, BLACK, HO5VV-F, 3G, 1.00mm2, 13A/250V SRV, 10 ea	
		KR cord	1	ASSEMBLY, Power Cord, STEALTH, KOREA, SCHUKO, BLACK, HO5VV-F, 3G, 1.00mm2, 13A/250V, 10 ea	
		AU cord	1	ASSEMBLY, Power Cord, STEALTH, AUSTRALIA, BLACK G TSA, 3G, 1.00mm2, 10A/250V, 10 ea	
		TW/JAPAN cord	1	ASSEMBLY, Power Cord, CBT1/CTB3, TAIWAN, BLACK, HO5VV-F, 3G, 10 ea	

\*Included in 11-404-05-SRV and 11-404-06-SRV

Diagram



**Error Code**

Error Code	Definition
Error:	Overtemp. condition detected.
Error:	Overload condition detected.
Error:	Temp. sensor not detected.
Error:	Reset error detected.
Error:	Read/Write error detected.
Error:	Motor control error detected.
Error:	Touch controller not detected.
Error:	Touch controller output is invalid.
Error:	Touch controller self-testfailed.

# SMOOTHER

Item N°	Product name	Current PN	Order QTY
10- 003- 02	Foam Tape, Heat Shield, Strip, 3/16in x 1- 1/4in x 10in / Foa	Discontinued	Discontinued
10- 012- E03BG	Screw, TFC, ZP, CR, #10 x 3/8in, PHP, Type 23 / Screw, TFC,	10- 012- E03BG	100
10- 017- D02C	Screw, Machine, SST, CR, UNC, #8- 32 x 1/4in, Flat Head / Scr	10- 017- D02C	100
20- 203- 02	Housing, Back, ICBX/ABCX / Housing, Back, ICBX/ABCX	20- 203- 02	24
20- 306- 03	Housing Assembly, Front, 15A/250V, EU / Housing Assembly, Fr	Discontinued	Discontinued
10- 021- C03R	Nut, Steel, ZP, UNC, #6- 32, Hex, RH / Nut, Steel, ZP, UNC, #	10- 021- C03R	100
10- 021- C06R	Nut, Steel, ZP, UNC, #6- 32, Nylon Insert, RH / Nut, Steel, Z	10- 021- C06R	100
10- 025- 01	Switch, Power, Rocker, O- I, Single Pole, 16A- 125V, 10A- 250V	10- 025- 01	100
10- 027- 05*	PHASEOUT! Cord, Power, EU, HO5VV- F, 3G, 1.50mm2, 16A/250V, B	10- 027- 05	10
10- 028- 11	Restraint, Cord, 0.290in - 0.385in Cable Dia, Lockit, RDD- 20	10- 028- 11	Not for sale
10- 029- 02	Wire, Jumper, 16AWG, Blk, 4in L, 0.25in F Tab x .25in Female	10- 029- 02- SRV	15
10- 029- 13	Wire, Jumper, 14AWG, Green w/Yellow Stripe, 6.0in L, 1/4in F	10- 029- 13- SRV	15
10- 219	Mount, PC Board, Rubber / Mount, PC Board, Rubber	10- 219	40
15- 442- 01	Electronic Assembly with Firmware, ICB3/5/7 / Electronic Ass	15- 442- 01- SRV	5
20- 203- 06	Housing, Front, ICBX/ABCX, 20A, Soft Mount / Housing, Front,	20- 203- 06	10
20- 315- 01	Magnetic Pickup Assembly, Q- Series, Board Connector / Magnet	20- 315- 01	100
<b>23- 402</b>	<b>Motor Assembly, ICB3, 240V / Motor Assembly, ICB3, 240V</b>	<b>Discontinued</b>	<b>Discontinued</b>
10- 008	Ring, Tolerance, 8 mm Bearing, Waffle Spacer / Ring, Toleran	10- 008	10
10- 015- D18G	Screw, Machine, ZP, CR, UNC, #8- 32 x 2- 1/4in, PHP / Screw, M	10- 015- D18G	100
10- 020- F06RT	Nut, Steel, ZP, UNF, 1/4- 28, Nylon Insert, RH, Thin / Nut, S	10- 020- F06RT	100
10- 030- 04	Brush and Holder Assembly, 2016 / 10- 030- 04 A	10- 030- 04	60
10- 067- 03	Spring, Wave, Overlap, Single Turn, OD .875, ID .62, Hght .1	10- 067- 03	100
10- 201- 03	PHASEOUT! Cup, Rubber, Bearing / Cup Rubber, Bearing	10- 201- 03	10
20- 214	Spacer, Fan / Spacer, Fan	20- 214- SRV	5
20- 217- 01	Sling Ring, Large I.D. / Sling Ring, Large I.D.	20- 217- 01	100
20- 220	Switch, Touchpad / Switch, Touchpad	20- 220	25
20- 269- 01	Base, ICB, Die Cast, Finished / Base, ICB, Die Cast, Finishe	20- 269- 01	12
20- 310	Armature Assembly, 1- 1/2in Stack, 240V	11- 404- 02- SRV	4
20- 311	Field Assembly, 1- 1/2in Stack, 240V	11- 404- 02- SRV	4
	120V Option	11- 404- 01- SRV	4
28- 005- 01	Bracket, Motor, Fan End, Stealth / Bracket, Motor, Fan End,	28- 005- 01- SRV	14
28- 027- 01	Bracket, Shroud, Motor, For Magnetic Pickup Assembly / Brack	28- 027- 01- SRV	25
20- 228- 02	Fan Blade, Uneven, LH, 7 Blade / Fan Blade, Uneven, LH, 7 BI	20- 228- 02	100
10- 010- C05C	Screw, STML, ZP, CR, #6 x 5/8in, FH / Screw, STML, ZP, CR, #	10- 010- C05C	100
10- 022- 07G04R	Split Lock Washer, 1/4in / Split Lock Washer, 1/4in	Discontinued	Discontinued

\*For updated cord info see the exploded view of the Connoisseur.

# Xpress

Item N°	Product name	Current PN	Order QTY
10- 008	Ring, Tolerance, 8mm Bearing, Waffle Spacer / Ring, Toleran	10- 008	10
10- 011- C05G	Screw, STML, SST, CR, #6- 20 x 5/8in, PHP / Screw, STML, SST,	10- 011- C05G	100
10- 020- F06RT	Nut, Steel, ZP, UNF, 1/4- 28, Nylon Insert, RH, Thin / Nut, S	10- 020- F06RT	100
10- 022- 01F01N	Washer, Type A, #12, ZP, Narrow, Flat / Washer, Type A, #12,	10- 022- 01F01N	100
10- 025- 01	Switch, Power, Rocker, O-I, Single Pole, 16A- 125V, 10A- 250V	10- 025- 01	100
20- 325- 14*	OBSOLETE!! Cord, Power, EU, Schuko, HO5VV- F, 3G, 1.00mm2, 10	Discontinued	Discontinued
10- 029- 20	Wire Jumper, 16AWG Green w/ yellow stripe, 5in Lg, 1/4in Fem	Discontinued	Discontinued
10- 029- 16	Wire, Jumper, 16 AWG, Blue, 5in L, 1/4in Female Tab x 1/4in	10- 029- 16- SRV	15
10- 029- 17	Wire, Jumper, 16 AWG, Brown, 10.0in L, 1/4in Flag Female Tab	10- 029- 17- SRV	15
10- 067- 03	Spring, Wave, Overlap, Single Turn, OD .875, ID .62, Hght .1	10- 067- 03	100
10- 030- 04	Brush and Holder Assembly, 2016 / 10- 030- 04 A	10- 030- 04	60
10- 201- 03	PHASEOUT! Cup, Rubber, Bearing / Cup, Rubber, Bearing	10- 201- 03	10
10- 231- 05	PHASEOUT! Ground Lead, 10in L with 1/4in Tab Connector / Gro	10- 231- 05	30
10- 245- 01	Screw, Custom, SST, CR, 8- 18 x 3- 1/8in, PHP, Type 25, Blk /	10- 245- 01	100
15- 443- 03	Electronic Assembly with Firmware, Xpress / Electronic Asse	15- 443- 03- SRV	5
20- 202- 59	Overlay, Touchpad, SpaceSaver, Smoother, EZ, Xpress, Interna	20- 202- 59	25
28- 027- 01	Bracket, Shroud, Motor, For Magnetic Pickup Assembly / Brack	28- 027- 01- SRV	25
28- 005	Bracket, Motor, Fan End / Bracket, Motor, Fan End, Stealth	28- 005- SRV	14
20- 214	Spacer, Fan / Spacer, Fan	20- 214- SRV	5
20- 217- 01	Sling Ring, Large I.D. / Sling Ring, Large I.D.	20- 217- 01	100
20- 220	Switch, Touchpad / Switch, Touchpad	20- 220	25
20- 228- 02	Fan Blade, Uneven, LH, 7 Blade / Fan Blade, Uneven, LH, 7 BI	20- 228- 02	100
20- 310	Armature Assembly, 1- 1/2in Stack, 240V / Armature Assembly,	11- 404- 02- SRV	4
20- 311	Field Assembly, 1- 1/2in Stack, 240V / Field Assembly, 1- 1/2i	11- 404- 02- SRV	4
	120V Option	11- 404- 01- SRV	4
20- 315- 01	Magnetic Pickup Assembly, Q- Series, Board Connector / Magnet	20- 315- 01	100
21- 201- 03	PHASEOUT! Cover, ES3, Blk / Cover, ES3, Blk	21- 201- 03- SRV	16
21- 211	PHASEOUT! Baffle, Square, ES3 / Baffle, Square, ES3	21- 211	100
21- 301	PHASEOUT! Base Plate Assembly, ES3, with Feet / Base Plate A	21- 301- SRV	36
21- 803- 04	Label, Display, Xpress / Label, Display, Xpress	21- 803- 04	15

\* For updated cord info see the exploded view of the EZ 600.

**EZ**

Item N°	Product name	Current PN	Order QTY
10- 008	Ring, Tolerance, 8mm Bearing, Waffle Spacer / Ring, Toleran	10- 008	10
10- 011- C05G	Screw, STML, SST, CR, #6- 20 x 5/8in, PHP / Screw, STML, SST,	10- 011- C05G	100
10- 020- F06RT	Nut, Steel, ZP, UNF, 1/4- 28, Nylon Insert, RH, Thin / Nut, S	10- 020- F06RT	100
10- 022- 01F01N	Washer, Type A, #12, ZP, Narrow, Flat / Washer, Type A, #12,	10- 022- 01F01N	100
10- 025- 01	Switch, Power, Rocker, O- I, Single Pole, 16A- 125V, 10A- 250V	10- 025- 01	100
10- 030- 04	Brush and Holder Assembly, 2016 / 10- 030- 04 A	10- 030- 04	60
10- 067- 03	Spring, Wave, Overlap, Single Turn, OD .875, ID .62, Hght .1	10- 067- 03	100
10- 201- 03	PHASEOUT! Cup, Rubber, Bearing / Cup, Rubber, Bearing	10- 201- 03	10
10- 231- 05	PHASEOUT! Ground Lead,10in L with 1/4in Tab Connector / Gro	10- 231- 05	30
10- 245- 01	Screw, Custom, SST, CR, 8- 18 x 3- 1/8in, PHP, Type 25, Blk /	10- 245- 01	100
20- 202- 62	Overlay, touchpad, Switch, SML, 4 button / Overlay, touchpad	20- 202- 62	25
20- 214	Spacer, Fan / Spacer, Fan	20- 214- SRV	5
20- 217- 01	Sling Ring, Large I.D. / Sling Ring, Large I.D.	20- 217- 01	100
20- 228- 02	Fan Blade, Uneven, LH, 7 Blade / Fan Blade, Uneven, LH, 7 BI	20- 228- 02	100
20- 310	Armature Assembly, 1- 1/2in Stack, 240V / Armature Assembly,	11- 404- 02- SRV	4
20- 311	Field Assembly, 1- 1/2in Stack, 240V / Field Assembly, 1- 1/2i	11- 404- 02- SRV	4
	120V Option	11- 404- 01- SRV	4
20- 315- 01	Magnetic Pickup Assembly, Q-Series, Board Connector / Magnet	20- 315- 01	100
10- 110- 06	Cable Tie, Nylon 6/6, 0.100in W x 8in L / Cable Tie, Nylon 6	10- 110- 06	Not for sale
10- 044- 03	Retainer, Wire, Plastic, Adhesive Mount / Retainer, Wire, PI	10- 044- 03	15
10- 031- 06	Connector, Closed End, LG Bell / Connector, Closed End, LG B	10- 031- 06	5
10- 029- 17	Wire, Jumper, 16 AWG, Brown, 10.0in L, 1/4in Flag Female Tab	10- 029- 17- SRV	15
10- 029- 16	Wire, Jumper, 16 AWG, Blue, 5in L, 1/4in Female Tab x 1/4in	10- 029- 16- SRV	15
10- 029- 14	Wire, Jumper, 16 AWG, Green w/Yellow Stripe, 8.0in L, 1/4in	10- 029- 14- SRV	15
15- 419- 06	Electronic Assembly with Firmware, EZ 600, Three size w/code	Discontinued	Discontinued

\* For updated cord info see the exploded view of the EZ 600.

**HP3A**

Item N°	Product name	Current PN	Order QTY
10- 008	Ring, Tolerance, 8mm Bearing, Waffle Spacer / Ring, Toleran	10- 008	10
10- 011- C05G	Screw, STML, SST, CR, #6- 20 x 5/8in, PHP / Screw, STML, SST,	10- 011- C05G	100
10- 020- F06RT	Nut, Steel, ZP, UNF, 1/4- 28, Nylon Insert, RH, Thin / Nut, S	10- 020- F06RT	100
10- 022- 01F01N	Washer, Type A, #12, ZP, Narrow, Flat / Washer, Type A, #12,	10- 022- 01F01N	100
10- 025- 01	Switch, Power, Rocker, O- I, Single Pole, 16A- 125V, 10A- 250V	10- 025- 01	100
10- 027- 09*	Cord, Power, USA, Type B, Nema 6/15P, 14/3 SJT, 15A/250V, BI	Discontinued	Discontinued
10- 028- 07	Restraint, Cord, 0.340in - 0.430in Cable Dia, Lockit, RDD 30	10- 028- 07	50
10- 029- 06	Wire, Jumper, 16AWG, Blk, 10in L, 1/4in Flag Female Tab x 90	10- 029- 06- SRV	15
10- 029- 14	Wire, Jumper, 16 AWG, Green w/Yellow Stripe, 8.0in L, 1/4in	10- 029- 14- SRV	15
10- 029- 15	Wire, Jumper, 16 AWG, White, 5in L, 1/4in Female Tab x 1/4in	10- 029- 15- SRV	15
10- 030- 04	Brush and Holder Assembly, 2016 / 10- 030- 04 A	10- 030- 04	60
10- 031- 06	Connector, Closed End, LG Bell / Connector, Closed End, LG B	10- 031- 06	5
10- 067- 03	Spring, Wave, Overlap, Single Turn, OD .875, ID .62, Hght .1	10- 067- 03	100
10- 201- 03	PHASEOUT! Cup, Rubber, Bearing / Cup, Rubber, Bearing	10- 201- 03	10
10- 231- 04	Ground Lead, 8in L / Ground Lead, 8in L	10- 231- 04- SRV	30
10- 245- 01	Screw, Custom, SST, CR, 8- 18 x 3- 1/8in, PHP, Type 25, Blk /	10- 245- 01	100
15- 419- 20	EA w/ FW, HP3, 15- 319- 02 / EA w/ FW, HP3, 15- 319- 02	15- 419- 20- SRV	5
20- 202- 47	Overlay, Touchpad Switch, HP3A, Silver/Gray / Overlay, Touch	20- 202- 47	25
28- 027- 01	Bracket, Shroud, Motor, For Magnetic Pickup Assembly / Brack	28- 027- 01- SRV	25
28- 005	Bracket, Motor, Fan End / Bracket, Motor, Fan End, Stealth	28- 005- SRV	14
20- 214	Spacer, Fan / Spacer, Fan	20- 214- SRV	5
20- 217- 01	Sling Ring, Large I.D. / Sling Ring, Large I.D.	20- 217- 01	100
20- 228- 02	Fan Blade, Uneven, LH, 7 Blade / Fan Blade, Uneven, LH, 7 BI	20- 228- 02	100
20- 310	Armature Assembly, 1- 1/2in Stack, 240V / Armature Assembly,	11- 404- 02- SRV	4
20- 311	Field Assembly, 1- 1/2in Stack, 240V / Field Assembly, 1- 1/2i	11- 404- 02- SRV	4
	120V Option	11- 404- 01- SRV	4
20- 315- 01	Magnetic Pickup Assembly, Q- Series, Board Connector / Magnet	20- 315- 01	100
21- 201- 03	PHASEOUT! Cover, ES3, Blk / Cover, ES3, Blk	21- 201- 03- SRV	16
21- 210	Cord Wrap, Velcro, Black / Cord Wrap, Velcro, Black	Discontinued	Discontinued
21- 211	PHASEOUT! Baffle, Square, ES3 / Baffle, Square, ES3	21- 211	100
21- 301	PHASEOUT! Base Plate Assembly, ES3, with Feet / Base Plate A	21- 301- SRV	36
21- 803- 06	PHASEOUT! Label, Display, Total Blender and HP, Chrome. Bein	21- 803- 06	50

\* For updated cord info see the exploded view of the EZ 600.