

THE INFORMATION CONTAINED IN THIS DRAWING IS THE SOLE PROPERTY OF K-TEC, INC. ANY REPRODUCTION IN PART OR WHOLE WITHOUT THE WRITTEN PERMISSION OF K-TEC, INC. IS PROHIBITED

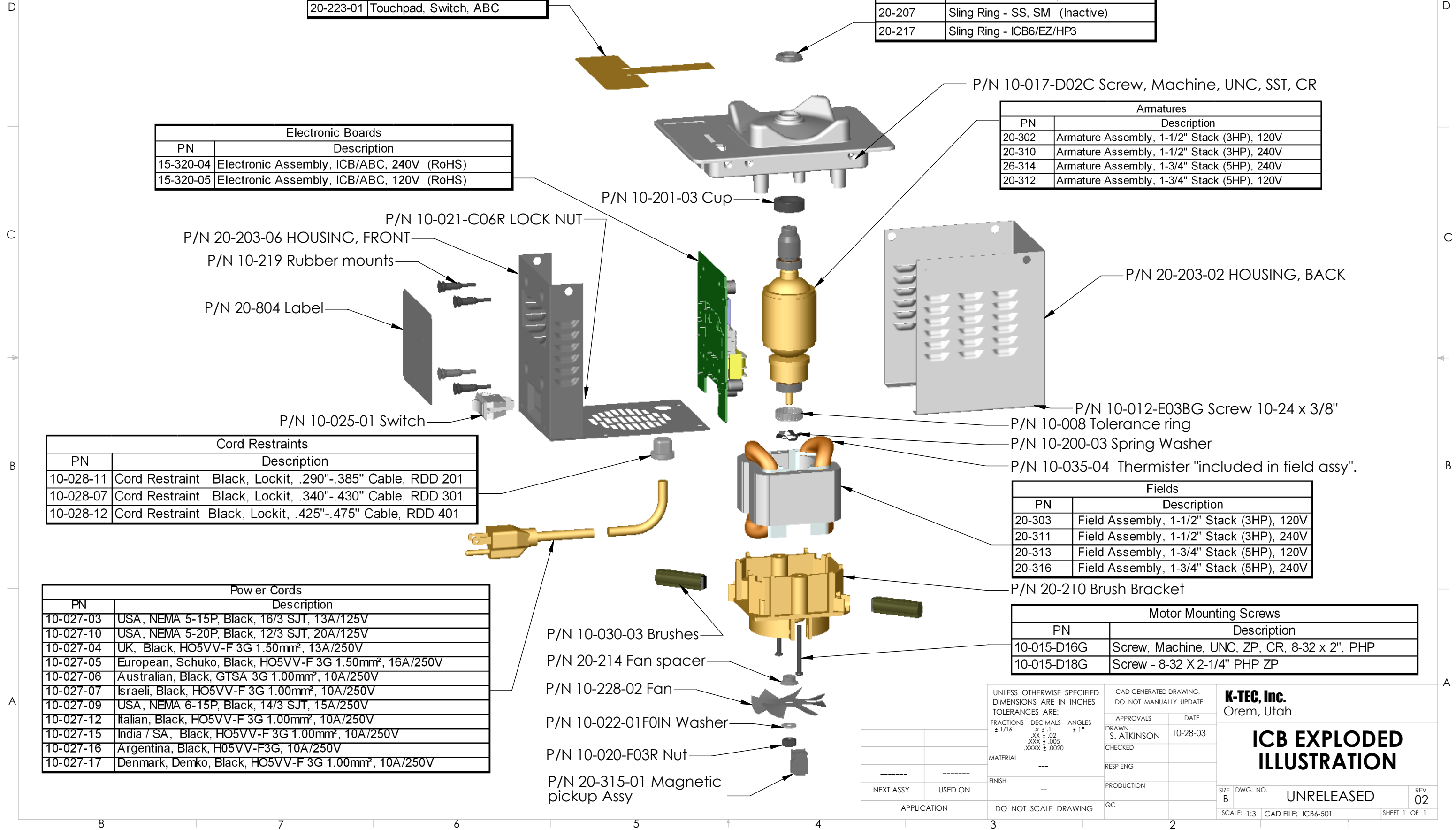
REVISIONS				
REV.	ECN	DESCRIPTION	DATE	BY
01		PRE-PRODUCTION RELEASE		
02		UNRELEASED DRAWING, CALL FOR MOST RECENT PRINT	7/13/07	SKA

Touchpads	
PN	Description
20-220	Touchpad- Switch (Circuit Only)
20-223-01	Touchpad, Switch, ABC

Sling Rings	
PN	Description
20-207	Sling Ring - SS, SM (Inactive)
20-217	Sling Ring - ICB6/EZ/HP3

Electronic Boards	
PN	Description
15-320-04	Electronic Assembly, ICB/ABC, 240V (RoHS)
15-320-05	Electronic Assembly, ICB/ABC, 120V (RoHS)

Armatures	
PN	Description
20-302	Armature Assembly, 1-1/2" Stack (3HP), 120V
20-310	Armature Assembly, 1-1/2" Stack (3HP), 240V
26-314	Armature Assembly, 1-3/4" Stack (5HP), 240V
20-312	Armature Assembly, 1-3/4" Stack (5HP), 120V



Cord Restraints		
PN	Description	
10-028-11	Cord Restraint Black, Lockit, .290"-.385" Cable, RDD 201	
10-028-07	Cord Restraint Black, Lockit, .340"-.430" Cable, RDD 301	
10-028-12	Cord Restraint Black, Lockit, .425"-.475" Cable, RDD 401	

Power Cords	
PN	Description
10-027-03	USA, NEMA 5-15P, Black, 16/3 SJT, 13A/125V
10-027-10	USA, NEMA 5-20P, Black, 12/3 SJT, 20A/125V
10-027-04	UK, Black, HO5VV-F 3G 1.50mm <sup>2</sup> , 13A/250V
10-027-05	European, Schuko, Black, HO5VV-F 3G 1.50mm <sup>2</sup> , 16A/250V
10-027-06	Australian, Black, GTS A 3G 1.00mm <sup>2</sup> , 10A/250V
10-027-07	Israeli, Black, HO5VV-F 3G 1.00mm <sup>2</sup> , 10A/250V
10-027-09	USA, NEMA 6-15P, Black, 14/3 SJT, 15A/250V
10-027-12	Italian, Black, HO5VV-F 3G 1.00mm <sup>2</sup> , 10A/250V
10-027-15	India / SA, Black, HO5VV-F 3G 1.00mm <sup>2</sup> , 10A/250V
10-027-16	Argentina, Black, HO5VV-F 3G, 10A/250V
10-027-17	Denmark, Demko, Black, HO5VV-F 3G 1.00mm <sup>2</sup> , 10A/250V

Fields	
PN	Description
20-303	Field Assembly, 1-1/2" Stack (3HP), 120V
20-311	Field Assembly, 1-1/2" Stack (3HP), 240V
20-313	Field Assembly, 1-3/4" Stack (5HP), 120V
20-316	Field Assembly, 1-3/4" Stack (5HP), 240V

Motor Mounting Screws	
PN	Description
10-015-D16G	Screw, Machine, UNC, ZP, CR, 8-32 x 2", PHP
10-015-D18G	Screw - 8-32 X 2-1/4" PHP ZP

UNLESS OTHERWISE SPECIFIED DIMENSIONS ARE IN INCHES TOLERANCES ARE:	
FRACTIONS ± 1/16	DECIMALS .XX ± .02 .XXX ± .005 .XXXX ± .0020
ANGLES ± 1°	
MATERIAL	---
FINISH	--
DO NOT SCALE DRAWING	

CAD GENERATED DRAWING, DO NOT MANUALLY UPDATE	
APPROVALS	DATE
DRAWN S. ATKINSON	10-28-03
CHECKED	
RESP ENG	
PRODUCTION	
QC	

**K-TEC, Inc.**  
Orem, Utah

**ICB EXPLODED ILLUSTRATION**

SIZE B	DWG. NO. UNRELEASED	REV. 02
SCALE: 1:3	CAD FILE: ICB6-501	SHEET 1 OF 1